

SUMMARY

AERIAL

SITE PLAN

PHOTOS

COMPETITION MAP

DEMOGRAPHICS

→ LOCATION

SEC of Clearview Parkway and Veterans Memorial Boulevard

→ GLA / ACREAGE

Approximately 700,000 SF / 40.5 Acres

→ AVAILABLE

392 SF - 15,000 SF

→ TRAFFIC COUNTS (ADT 2008)

On Veterans Memorial Boulevard, east of Clearview Parkway: 55,200
On Veterans Memorial Boulevard, west of Clearview Parkway: 45,900

→ TENANTS INCLUDE

Sears, Target, AMC Palace Theatre 12, Bed Bath & Beyond, MeMe's, Serranos Salsa Company, Zea Rotisserie & Grill, Semolina, Dollar Tree, Bath & Body Works, Rocky Mountain Chocolate Factory, GNC, Ponseti's Shoes, Hallmark, PJ's Coffee, Shoe Dept., Jewelry Box, Hair USA, Oscar's Watch & Jewelry, WOW Café and Wingery, Smoothie King, and many more!

→ SUMMARY

Located in Jefferson Parish, the heart of the New Orleans Metropolitan Market, Clearview Mall remains a vibrant and high profile property. With visibility and access from both the high traffic corridors of the I-10/Clearview interchange and the intersections of Veterans Memorial Boulevard and Clearview Parkway, this shopping center is one of the most recognized properties in the region. Anchored by Target, Sears, AMC Palace Theatre 12 and Bed Bath and Beyond, this property is a major destination for local and regional shoppers. The site also draws many customers to the restaurants alone which include Zea Rotisserie & Grill, Semolina and Serannos Salsa Company. With spaces available between 392 and 15,000 square feet, this property is well suited to accommodate national and regional retailers and restaurants.



CHRIS ABADIE

[o] 504.523.4481 Ext. 8139

[direct] 504.620.8139

cabadie@stirlingprop.com

The foregoing is solely for information purposes and is subject to change without notice. Stirling Properties makes no representations or warranties regarding the properties or information herein including but not limited to any and all images pertaining to these properties. It is the obligation of each purchaser/lessee to investigate the condition and attributes of the properties and to verify the accuracy of the foregoing information to the extent such purchaser/lessee deems necessary. Also subject to errors, omissions, changes in terms and conditions, prior sale, lease or withdrawal, without notice. 12/10

SUMMARY

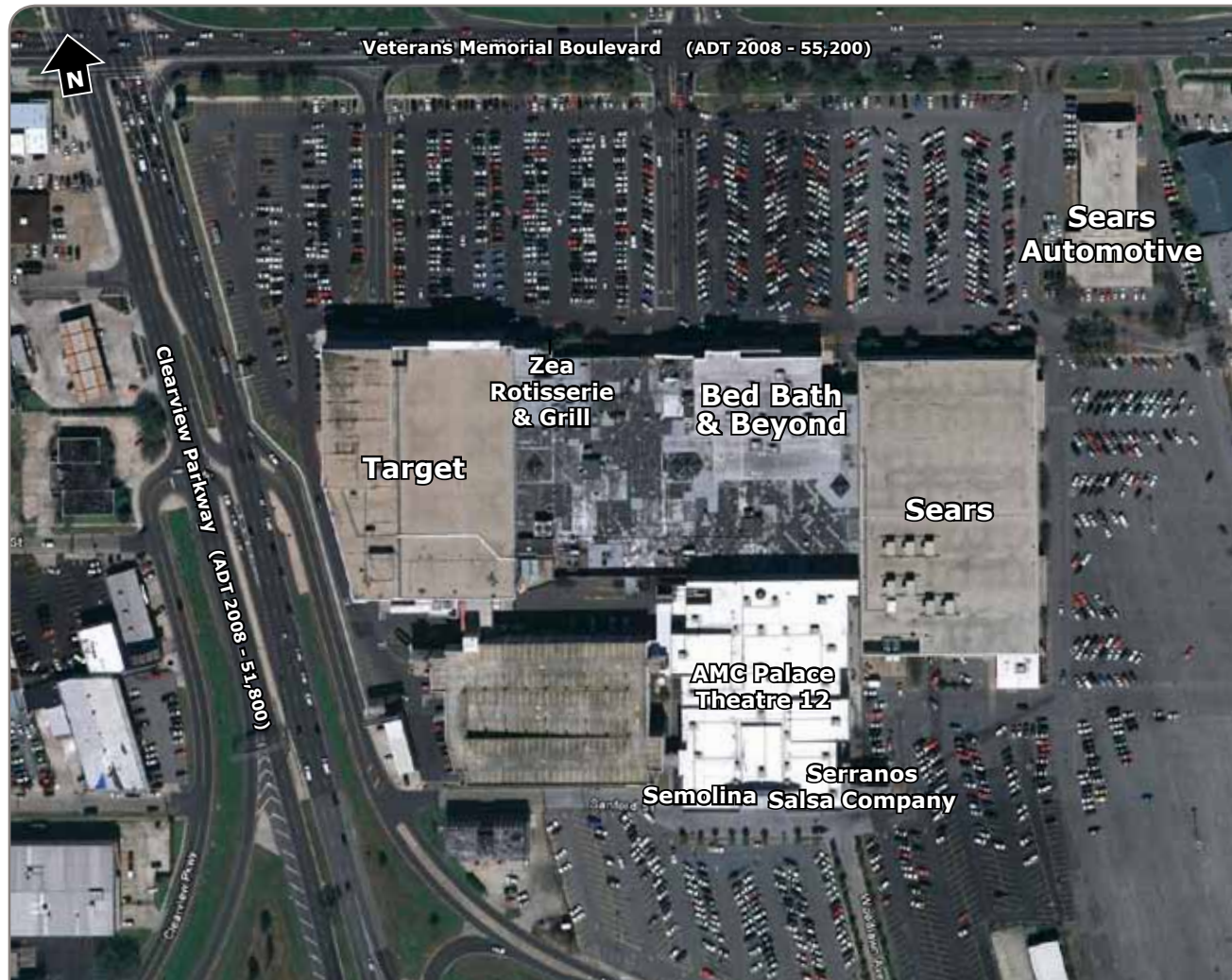
AERIAL

SITE PLAN

PHOTOS

COMPETITION
MAP

DEMOGRAPHICS



CHRIS ABADIE

[o] 504.523.4481 Ext. 8139

[direct] 504.620.8139

cabadie@stirlingprop.com

The foregoing is solely for information purposes and is subject to change without notice. Stirling Properties makes no representations or warranties regarding the properties or information herein including but not limited to any and all images pertaining to these properties. It is the obligation of each purchaser/lessee to investigate the condition and attributes of the properties and to verify the accuracy of the foregoing information to the extent such purchaser/lessee deems necessary. Also subject to errors, omissions, changes in terms and conditions, prior sale, lease or withdrawal, without notice. 12/10



SUMMARY

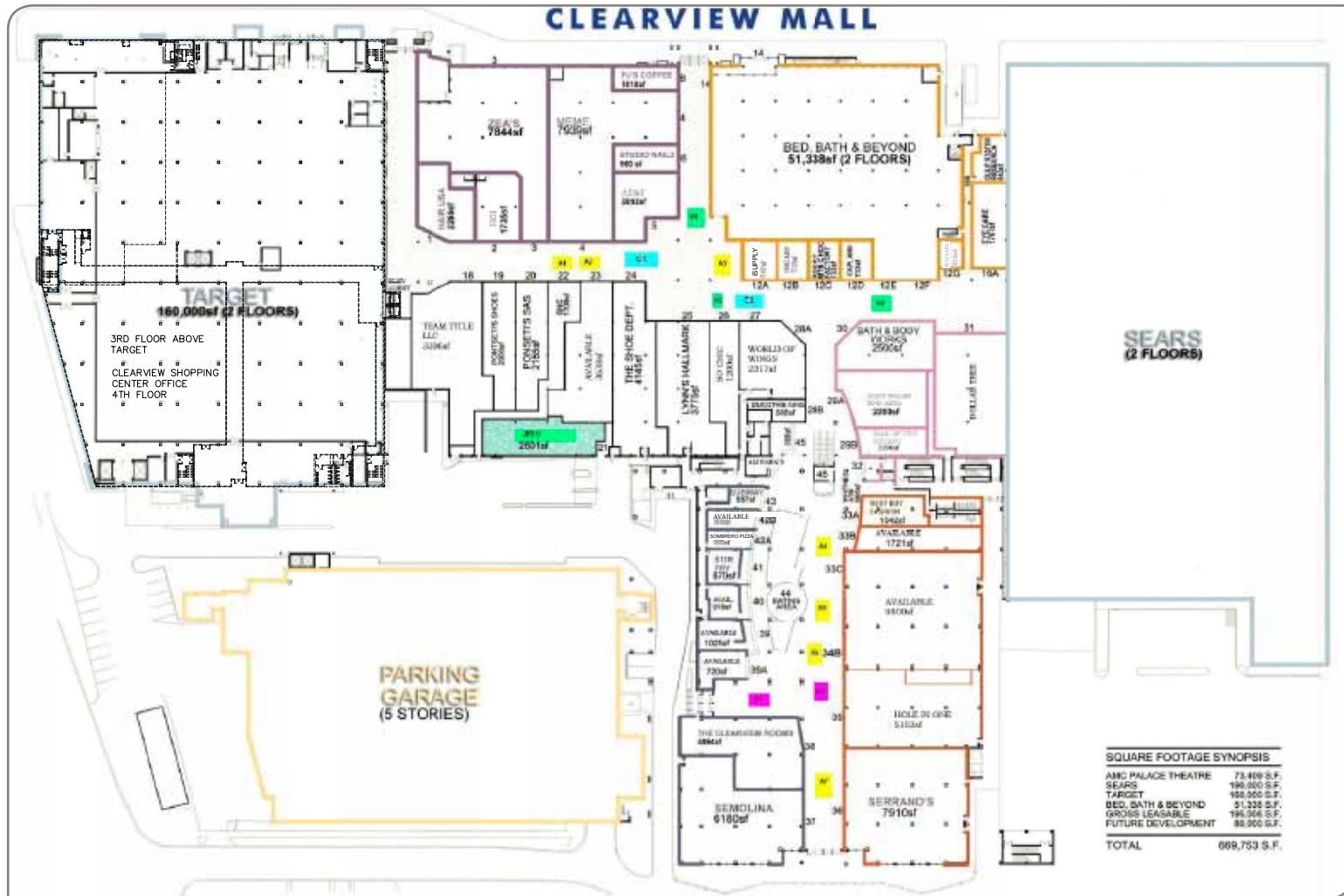
AERIAL

SITE PLAN

PHOTOS

COMPETITION
MAP

DEMOGRAPHICS



CLICK IMAGE
TO VIEW INTERACTIVE
PDF



CHRIS ABADIE

[o] 504.523.4481 Ext. 8139

[direct] 504.620.8139

cabadie@stirlingprop.com

The foregoing is solely for information purposes and is subject to change without notice. Stirling Properties makes no representations or warranties regarding the properties or information herein including but not limited to any and all images pertaining to these properties. It is the obligation of each purchaser/lessee to investigate the condition and attributes of the properties and to verify the accuracy of the foregoing information to the extent such purchaser/lessee deems necessary. Also subject to errors, omissions, changes in terms and conditions, prior sale, lease or withdrawal, without notice. 12/10

SUMMARY

AERIAL

SITE PLAN

PHOTOS

COMPETITION
MAP

DEMOGRAPHICS



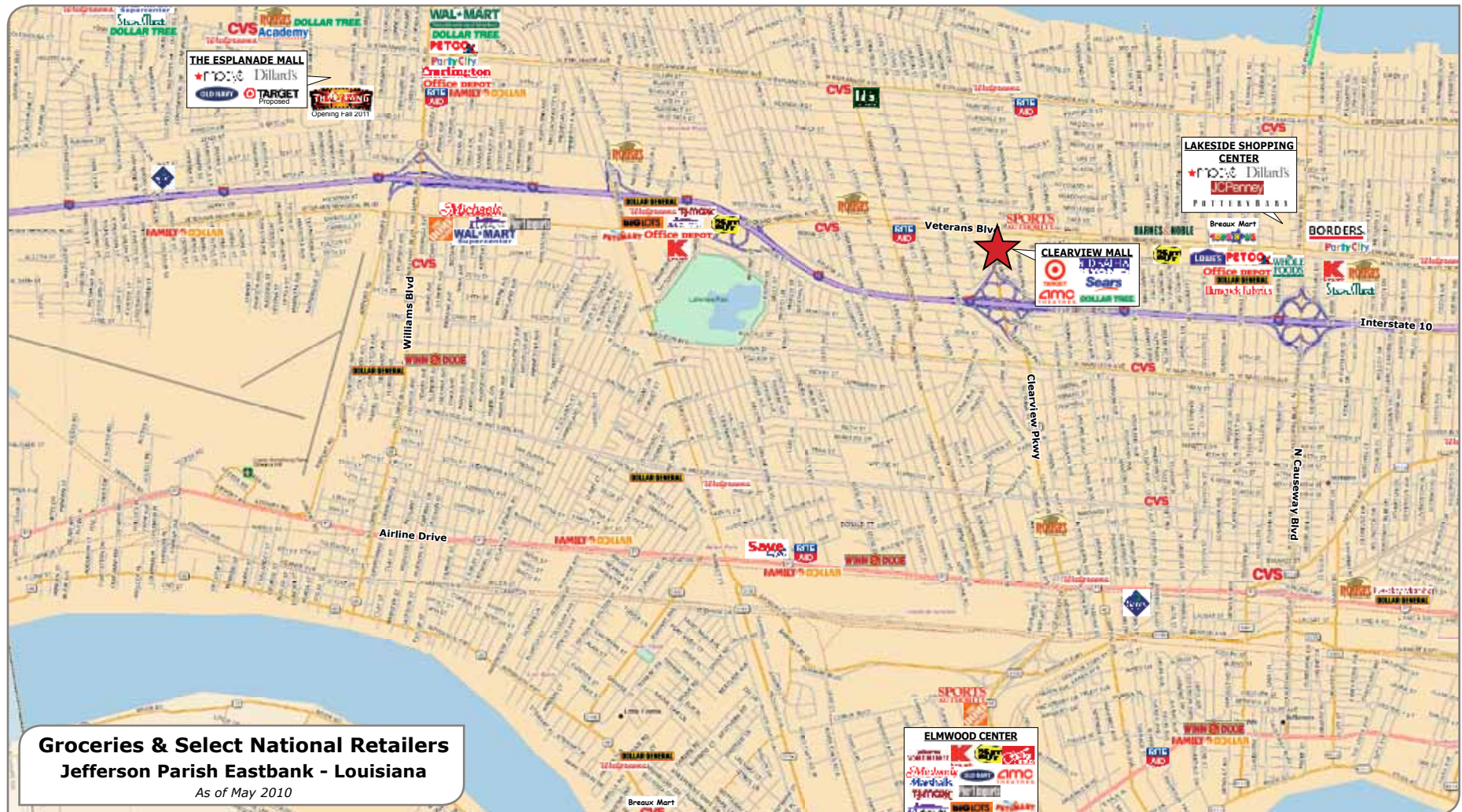
CHRIS ABADIE

[o] 504.523.4481 Ext. 8139

[direct] 504.620.8139

cabadie@stirlingprop.com

The foregoing is solely for information purposes and is subject to change without notice. Stirling Properties makes no representations or warranties regarding the properties or information herein including but not limited to any and all images pertaining to these properties. It is the obligation of each purchaser/lessee to investigate the condition and attributes of the properties and to verify the accuracy of the foregoing information to the extent such purchaser/lessee deems necessary. Also subject to errors, omissions, changes in terms and conditions, prior sale, lease or withdrawal, without notice. 12/10



Groceries & Select National Retailers
Jefferson Parish Eastbank - Louisiana
As of May 2010



CHRIS ABADIE

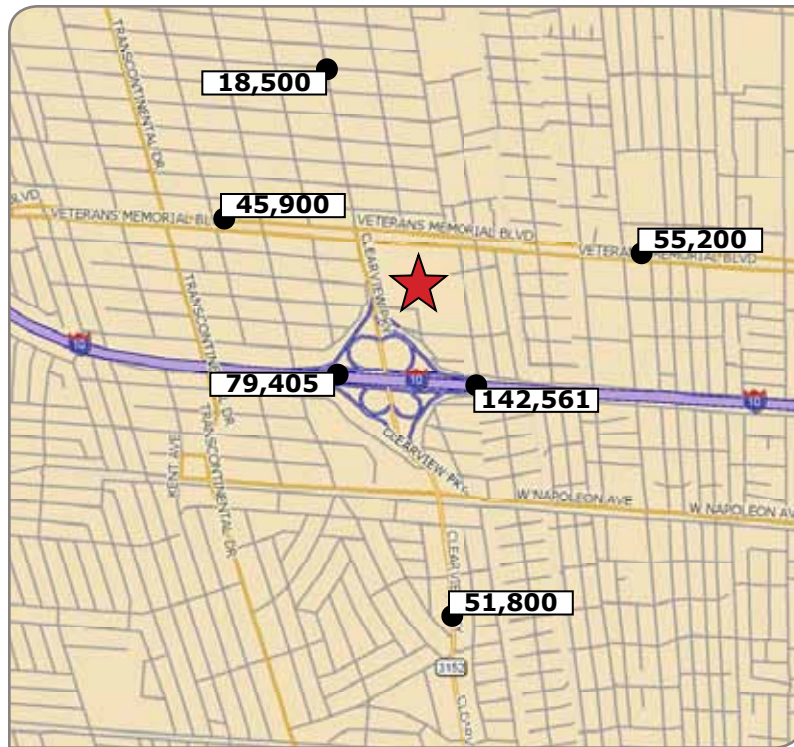
[o] 504.523.4481 Ext. 8139

[direct] 504.620.8139

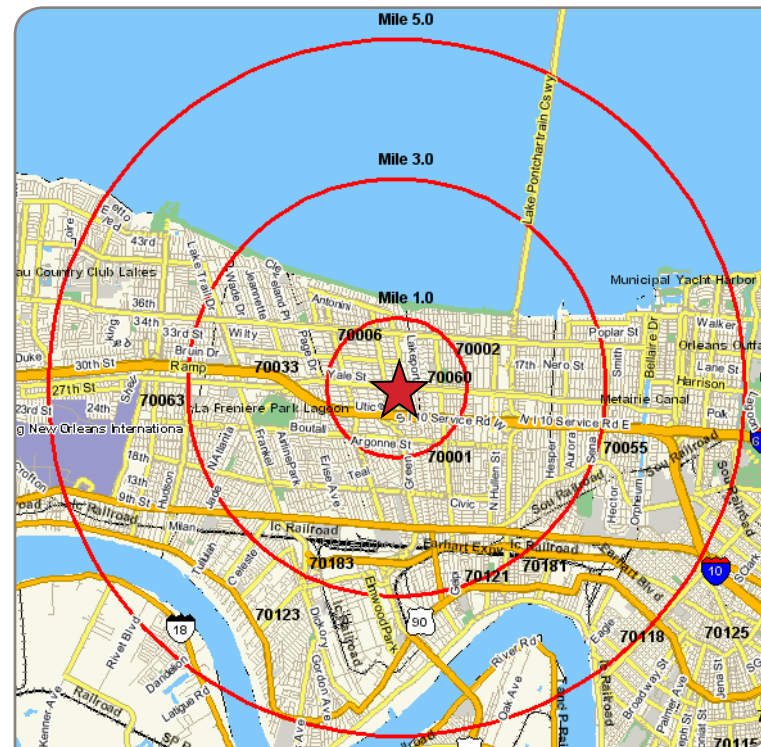
cabadie@stirlingprop.com

The foregoing is solely for information purposes and is subject to change without notice. Stirling Properties makes no representations or warranties regarding the properties or information herein including but not limited to any and all images pertaining to these properties. It is the obligation of each purchaser/lessee to investigate the condition and attributes of the properties and to verify the accuracy of the foregoing information to the extent such purchaser/lessee deems necessary. Also subject to errors, omissions, changes in terms and conditions, prior sale, lease or withdrawal, without notice. 12/10

↓ TRAFFIC COUNT MAP (ADT 2008)



↓ DEMOGRAPHIC MAP



➔ DEMOGRAPHICS - 2010 ESTIMATES

	1 MILE	3 MILE	5 MILE	10 MILE
POPULATION	22,638	129,637	250,654	581,542
AVG. HOUSEHOLD INCOME	\$57,202	\$69,413	\$68,974	\$62,713

CHRIS ABADIE

[o] 504.523.4481 Ext. 8139

[direct] 504.620.8139

cabadie@stirlingprop.com

The foregoing is solely for information purposes and is subject to change without notice. Stirling Properties makes no representations or warranties regarding the properties or information herein including but not limited to any and all images pertaining to these properties. It is the obligation of each purchaser/lessee to investigate the condition and attributes of the properties and to verify the accuracy of the foregoing information to the extent such purchaser/lessee deems necessary. Also subject to errors, omissions, changes in terms and conditions, prior sale, lease or withdrawal, without notice. 12/10